

Ceglu™ Coating Solution

Chemically Defined Scaffold for Stem Cell Culture

High Safety & Stability

Fully chemically defined composition with no animal-derived components
Long-term stability at room temperature



Uniform Culture Surface

Uniform surface formed on coated substrate that ensures stable stem cell culture



Versatile Coating Application

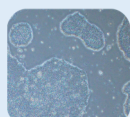
Ceglu™ can be coated onto wide range of surfaces & devices, providing a consistent cell culture environment even when substrates or device change.



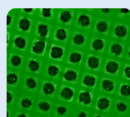
*Ceglu™ coating solution is designed for manufacturers of cell equipment and substrates



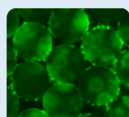
iPSCs



Dish

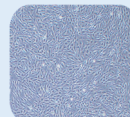


Woven Fabric

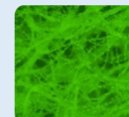


Microcarriers

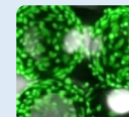
MSCs



Dish



Non-woven Fabric



Microcarriers

Examples of cell culture on various substrates with Ceglu™

Ceglu™ Multiwell Plate

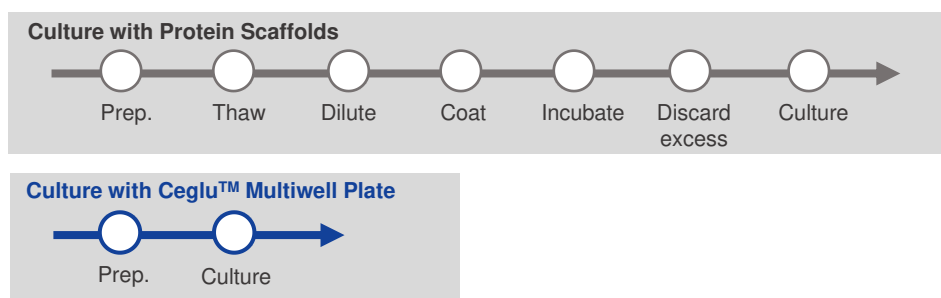
Pre-coated Plate for Easier Stem Cell Culture

Ready-to-use

Room-temperature stable, pre-coated with Ceglu™ and sterilized, Ceglu™ multiwell plate is ready for immediate use in cell culture

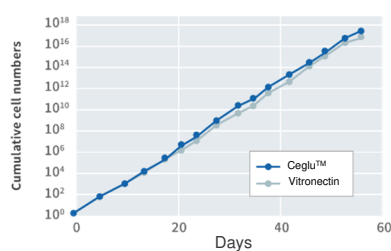
Reduced Experimental Burden, Improved Reproducibility

Eliminates need for manual coating of culture containers, simplifying experiments and enhancing reproducibility.



Ceglu™ Features

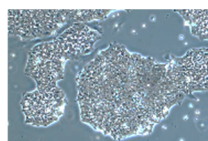
Long-term Culture of iPSCs*



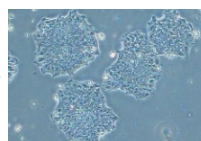
*Tested for MSCs and ADSCs,
Data available upon request

Room Temperature Stability

Freshly Prepared



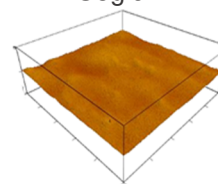
Stored at RT, 1 year



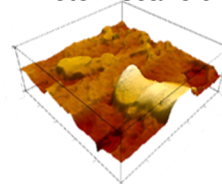
Ceglu™ Storage Test (iPSCs)

Uniform Culture Surface*

Ceglu™



Protein scaffold



*Surface observation by AFM in water

Order information

Product	Catalog #
Ceglu™ coating solution	Coming soon
Ceglu™ multiwell plate (6-well)	Coming soon

SEKISUI

SEKISUI AMERICA CORPORATION

6659 Top Gun Street
San Diego, CA 92121 USA

Contact : support_life@sekisui.com



Visit us online

For Research Use Only. Not for use in diagnostic or therapeutic procedures.
Specifications are subject to change without notice for improvement.